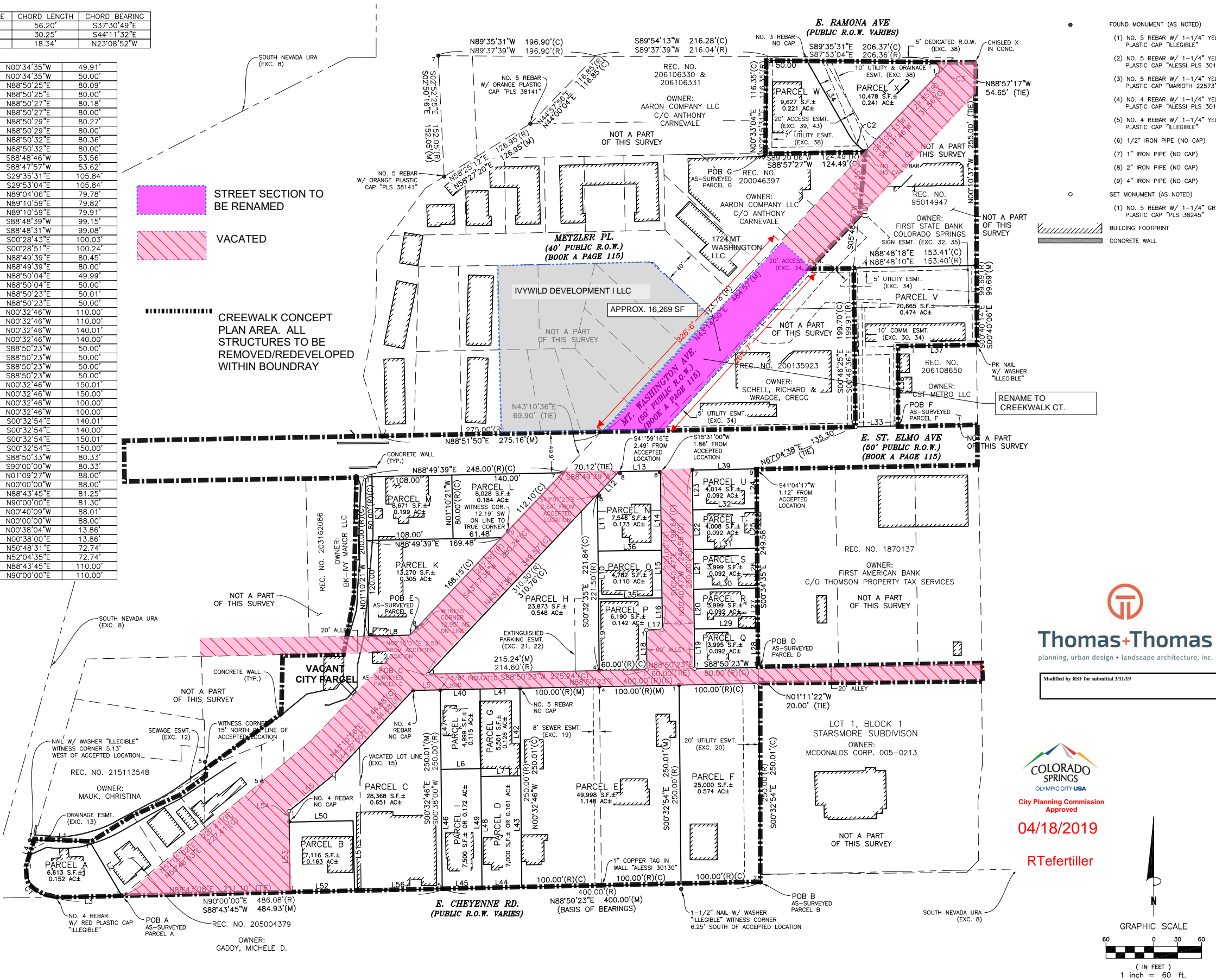


FIGURE 1

CURVE	RADIUS	ARC LENGTH	DELTA ANGLE	CHORD LENGTH	CHORD BEARING
C1(R)(C)	35.00'	65.25'	106°49'10"	56.20'	S37°30'49"E
C2(R)(C)	60.00'	30.58'	29°12'03"	30.25'	S44°11'32"E
C3(R)(C)	10.00'	23.20'	132°55'16"	18.34'	N23°08'52"W

LINE	BEARING	DISTANCE	L28(C)	N00°34'35"W	49.91'
L1(C)	S88°25'27"E	70.00'	L28(R)	N00°34'35"W	50.00'
L1(R)	S87°09'28"E	70.00'	L29(C)	N88°50'25"E	80.00'
L2(C)	S30°37'38"E	79.40'	L29(R)	N88°50'25"E	80.00'
L2(R)	S30°31'16"E	79.40'	L30(C)	N88°50'27"E	80.18'
L3(C)	S88°44'01"W	84.16'	L30(R)	N88°50'27"E	80.27'
L3(R)	S90°00'00"W	84.16'	L31(C)	N88°50'29"E	80.00'
L4(C)	N16°05'29"E	28.65'	L31(R)	N88°50'29"E	80.00'
L4(R)	N17°21'28"E	28.65'	L32(C)	N88°50'32"E	80.36'
L5(M)	N88°49'24"E	34.10'	L32(R)	N88°50'32"E	80.00'
L5(R)	N90°00'00"E	34.10'	L33(C)	S88°48'46"W	53.56'
L6(C)	S88°50'23"W	49.99'	L33(R)	S88°47'57"W	53.62'
L6(R)	S88°50'23"W	50.00'	L34(C)	S29°35'31"E	105.84'
L7(C)	S88°50'23"W	50.01'	L34(R)	S29°53'04"E	105.84'
L7(R)	S88°50'23"W	50.01'	L35(C)	N89°04'06"E	79.78'
L8(C)	N88°49'39"E	51.69'	L35(R)	N89°10'59"E	79.82'
L9(C)	N00°30'00"W	90.00'	L36(R)	N89°10'59"E	79.91'
L9(R)	N00°30'00"W	90.00'	L37(C)	S88°48'39"W	99.15'
L10(C)	N00°36'28"W	60.07'	L37(R)	S88°48'31"W	99.08'
L10(R)	N00°36'28"W	60.00'	L38(C)	S00°28'43"E	100.03'
L11(C)	N00°32'35"W	71.63'	L38(R)	S00°28'51"E	100.24'
L11(R)	N00°32'35"W	71.50'	L39(C)	N88°49'39"E	80.45'
L12(C)	N43°17'36"E	38.82'	L39(R)	N88°49'39"E	80.00'
L12(R)	N43°17'36"E	39.90'	L40(C)	N88°50'04"E	49.99'
L13(C)	N88°49'39"E	52.52'	L40(R)	N88°50'04"E	50.00'
L13(R)	N88°49'39"E	52.20'	L41(C)	N88°50'23"E	50.01'
L14(C)	S00°46'59"E	99.82'	L41(R)	N88°50'23"E	50.00'
L14(R)	S00°46'59"E	100.00'	L42(C)	N00°32'46"W	110.00'
L15(C)	S00°30'28"E	59.91'	L42(R)	N00°32'46"W	110.00'
L15(R)	S00°30'28"E	60.00'	L43(C)	N00°32'46"W	140.01'
L16(C)	S00°40'47"E	39.91'	L43(R)	N00°32'46"W	140.00'
L16(R)	S00°40'47"E	40.00'	L44(C)	S88°50'23"W	50.00'
L17(C)	N88°57'13"E	20.00'	L44(R)	S88°50'23"W	50.00'
L17(R)	N88°57'13"E	20.00'	L45(C)	S88°50'23"W	50.00'
L18(C)	S00°40'47"E	49.95'	L45(R)	S88°50'23"W	50.00'
L18(R)	S00°40'47"E	50.00'	L46(C)	N00°32'46"W	150.01'
L19(C)	N00°40'47"W	49.91'	L46(R)	N00°32'46"W	150.00'
L19(R)	N00°40'47"W	50.00'	L47(C)	N00°32'46"W	100.00'
L20(C)	N00°40'47"W	49.91'	L47(R)	N00°32'46"W	100.00'
L20(R)	N00°40'47"W	50.00'	L48(C)	S00°32'54"E	140.01'
L21(C)	N00°40'47"W	49.91'	L48(R)	S00°32'54"E	140.00'
L21(R)	N00°40'47"W	50.00'	L49(C)	S00°32'54"E	150.01'
L22(C)	N00°40'47"W	49.91'	L49(R)	S00°32'54"E	150.00'
L22(R)	N00°40'47"W	50.00'	L50(C)	S88°50'33"W	80.33'
L23(C)	N00°40'47"W	49.92'	L50(R)	S90°00'00"W	80.33'
L23(R)	N00°40'47"W	50.00'	L51(C)	N01°09'27"W	88.00'
L24(C)	N00°34'35"W	49.94'	L51(R)	N00°00'00"W	88.00'
L24(R)	N00°34'35"W	50.00'	L52(C)	N88°43'45"E	81.25'
L25(C)	N00°34'35"W	49.91'	L52(R)	N90°00'00"E	81.30'
L25(R)	N00°34'35"W	50.00'	L53(C)	N00°40'09"W	88.01'
L26(C)	N00°34'35"W	49.91'	L53(R)	N00°00'00"W	88.00'
L26(R)	N00°34'35"W	50.00'	L54(C)	N00°38'04"W	13.86'
L27(C)	N00°34'35"W	49.91'	L54(R)	N00°38'00"E	13.86'
L27(R)	N00°34'35"W	50.00'	L55(C)	N50°48'31"E	72.74'
			L55(R)	N52°04'35"E	72.74'
			L56(C)	N88°43'45"E	110.00'
			L56(R)	N90°00'00"E	110.00'



LAND SURVEY PLAT

A PORTION OF THE NE 1/4 OF THE NW 1/4 OF SECTION 30
TOWNSHIP 14 SOUTH, RANGE 66 WEST OF THE 6TH P.M.
CITY OF COLORADO SPRINGS, EL PASO COUNTY, COLORADO

Project No. 180144
Drawn By: NSB
Checked By: SLM
Date: 03/06/2018
Sheet 2 of 2

Notice: According to Colorado law you must commence any legal action based upon any error or omission in this survey within 180 days of the date of the certification shown hereon. If you first discover such defect in no event may any action based upon any defect in this survey be commenced more than ten years from the date of the certification shown hereon.

Revisions

No.	Description	By	Date